



MAVIS IM-30/IM-100 IEEE 1394 Digital Industrial Cameras

Introduction

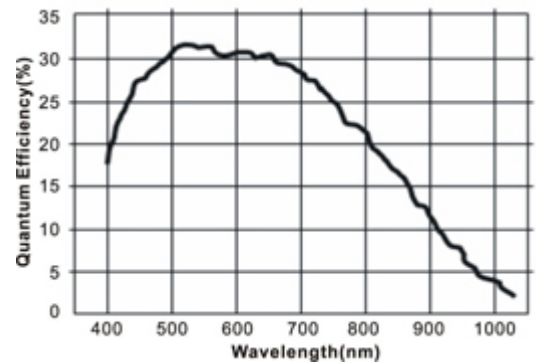
MAVIS is a new and exciting vision product line from ICP DAS, designed specifically for industrial machine vision applications. The MAVIS IM series is designed to meet or exceed IEEE 1394 standards, while offering industry leading VGA resolution, high-performance frame rates, and a competitive price point! The Mavis IM30 offers 30fps for low-cost progressive-scan inspection applications, while the Mavis IM100 can offer up to 100fps, in full resolution for advanced high-speed inspection applications.

Features

- Monochrome progressive-scan for on-the-fly applications
- Acquisition speed up to 100fps in full resolution
- AOI (Area of Interest) image acquisition
- Mirror image acquisition
- Build-in 8MB memory buffer
- Flexible electric exposure control
- Robust external trigger I/O interface supported
- Free SDK API for VC, VB, BCB and VisualStudio.NET
- Compatible with NI-IMAQ-1394
- Driver supports Windows2000/XP
- Free EZView Utility
- AOI image acquisition



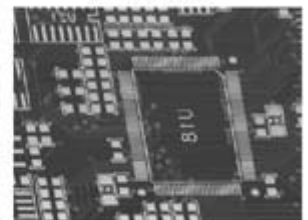
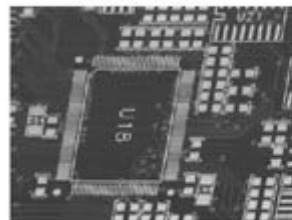
Spectral Response



- Mirror image acquisition

Normal Image

Mirror Image



Specifications

Item	IM-30	IM-100
Image sensor	1/2" CMOS Sensor Micron MT9V403, Pixel size: 9.9um x 9.9um	
Video output pixels	640(H) x 480(V)	
Gain control	0 ~ 12dB setting via communication command	
Power supply	+12VDC normal (Supply via 1394 cable)	
Power consumption	Max. ~ 1.7W at 12V	
Acquisition mode	Free Run (exposure time programmable), External random trigger	
Connector Interface	6-Pin IEEE 1394 connector(for video and power) 10-Pin GPIO (General Purpose Input/Output)connector	
GPIO connector	TTL level with 2 input, 4 output and one +5VDC output	
Video mode	Initial mode: 640 x 480 at 30fps Scalable mode: by AOI	Initial mode: 640 x 480 at 100fps Scalable mode: by AOI
Protocol	IEEE 1394a version. 1.31 (transfer speed 400Mbps)	
Test image	Gray value internal test pattern generated	
Exposure Time	Programmable via IEEE 1394 bus	
Brightness	Programmable via IEEE 1394 bus	

Temperature	Operating temperature : 0°C ~ 50°C (32°F ~ 122°F) Storage temperature: -20°C ~ 60°C (-4°F ~ 140°F)
Humidity	Operating humidity : 20% ~ 80%, relative, non-condensing Storage humidity: 10% ~ 90%, relative, non-condensing
EMC condition	CE/FCC
Dimension	72.5mm (H) x 49mm(W) x 36.7mm(D) without Lens
Weight	120g without Lens
Lens Adaptor	C/CS Mount

Ordering Information

IM-30	IEEE 1394 Digital Camera (640 x 480, Monochrome, 30fps, Lens not included)
IM-100	IEEE 1394 Digital Camera (640 x 480, Monochrome, 100fps, Lens not included)

Accessories

IOI-4601-21		Dual 1394 Host Controller (TI Chipset) PCI Interface Card
CA-1394-45		IEEE 1394 Latch Cable (6P-6P, L:4.5m)
1394R3B		IEEE 1394a (1port to 2ports) Repeater