

# CN2510 Series

## 8 and 16-port RS-232 Terminal Servers



### Features

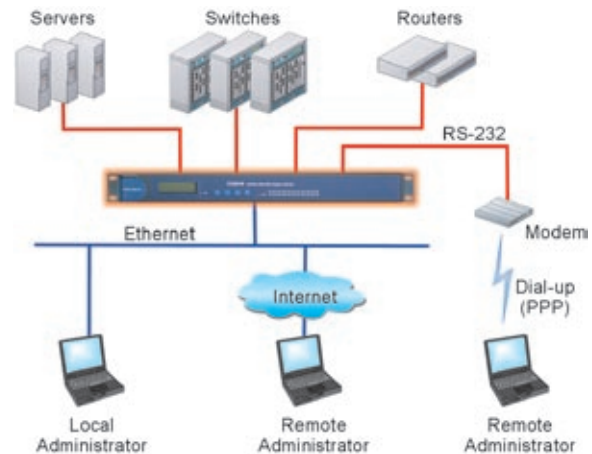
- > LCD control panel for easy on-site management
- > Up to 16 dial-in users when operating as stand-alone remote access server
- > PPP/SLIP with RADIUS authentication and RIP I/II routing protocol
- > Real COM/TTY drivers for Windows and Linux
- > ±48 VDC for telecom applications



### Remote Console Management

For most companies, the performance of IT equipment is critical to daily operation. To keep a server, router, PBX, or leased-line modem working properly, it is important to minimize downtime and troubleshoot faulty devices quickly. KVM is commonly used for in-band management of devices that are equipped with a screen and keyboard. However, RS-232 console access is often used as a last resort for all devices.

The CN2510 provides an easy console management solution in a convenient 1U rackmount package. With its RS-232 ports, connections are easily established to the console ports of network equipment, such as Unix servers or routers, for centralized management of the attached devices. Each device's RS-232 console port becomes a network-accessible node, giving users Telnet access from anywhere on the network for configuration and management of the device. Full modem control signals are supported, ensuring compatibility with a wide range of serial peripherals.



### Security Functions

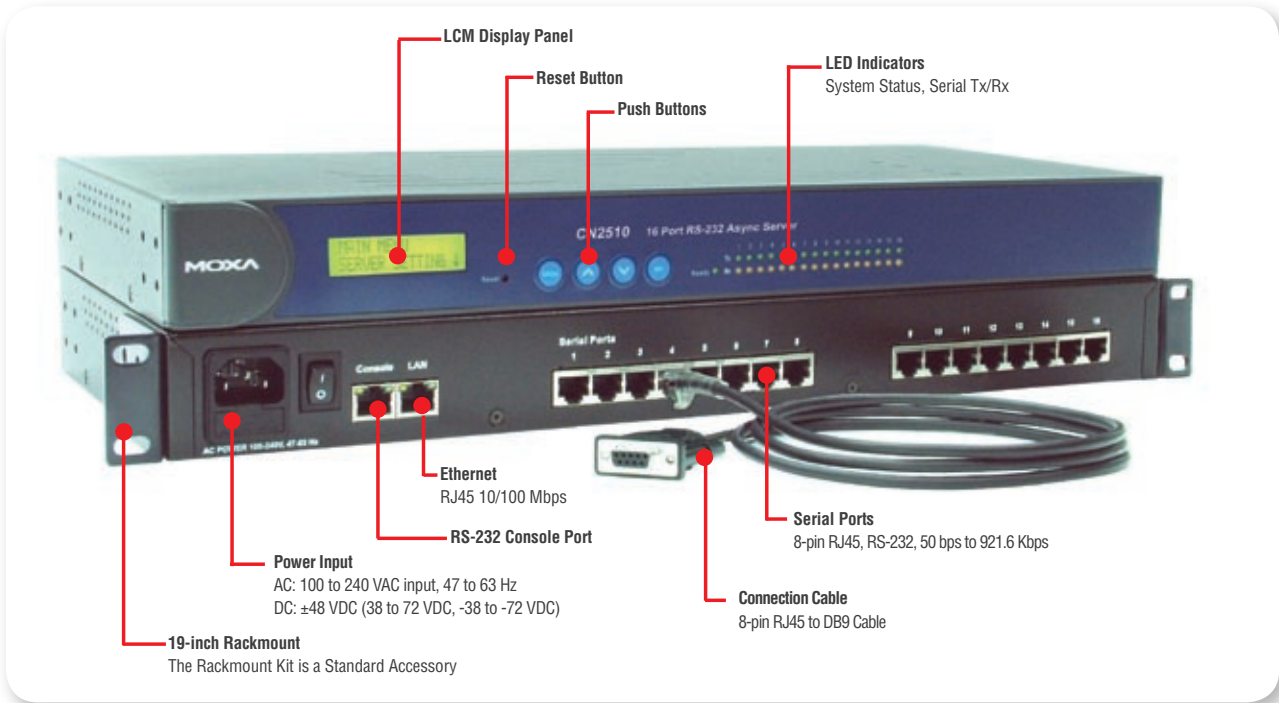
#### User Authentication

It is very important that access is strictly controlled in a console management solution, and user privileges should be validated before a console port connection is allowed. The CN2510's authentication procedure involves verifying the username and password against an internal database or a RADIUS server.

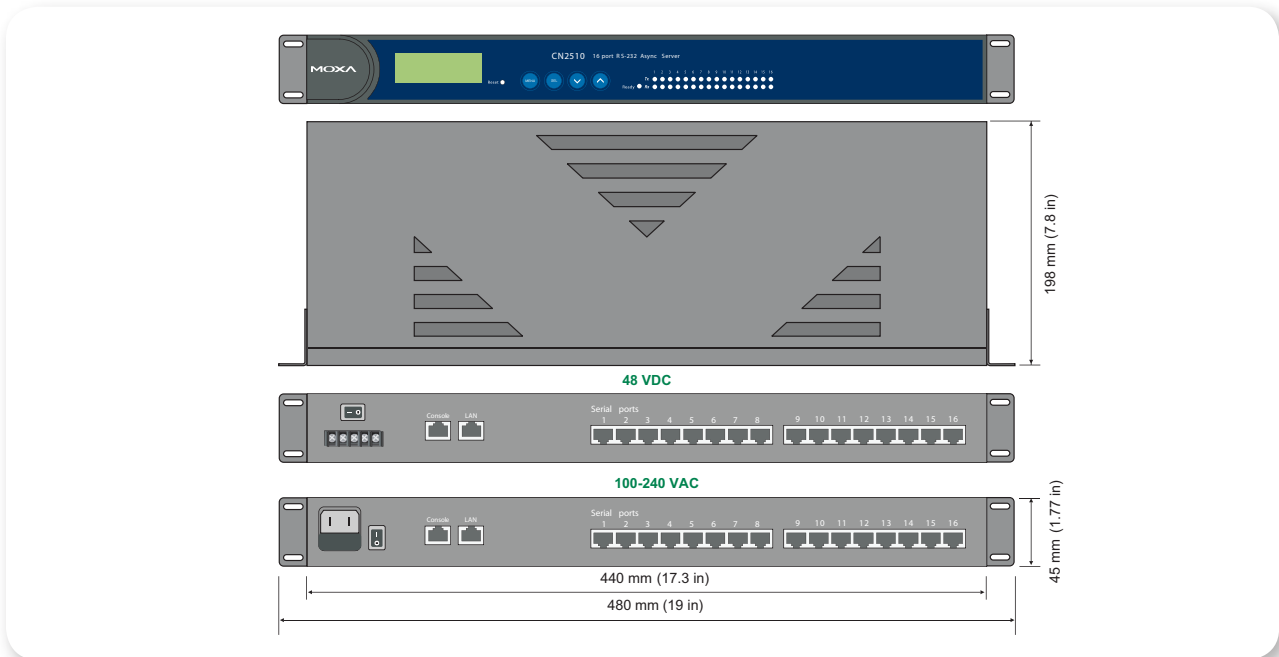
#### Dial-back

When a dial-up connection is used for out-of-band management, the CN2510 provides a convenient dial-back function. Instead of accepting a connection request directly, the CN2510 calls back the management host to establish the connection. The dial-back function helps ensure that only registered users or hosts can remotely connect to the network through the CN2510. It also helps consolidate long distance phone costs.

## CN2510 Series

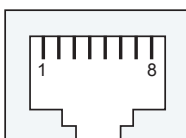


## Dimensions (unit = mm)



## Pin Assignment

### RJ45 RS-232 Port



| Pin | Signals   |
|-----|-----------|
| 1   | DSR (in)  |
| 2   | RTS (out) |
| 3   | GND       |
| 4   | TxD (out) |

| Pin | Signals   |
|-----|-----------|
| 5   | RxD (in)  |
| 6   | DCD (in)  |
| 7   | CTS (in)  |
| 8   | DTR (out) |

## Specifications

### Hardware

**CPU:** 32-bit RISC

**RAM:** 4 MB

**Flash ROM:** 2 MB

**I/O Controller:** 16C550C compatible UART

### LAN

**Protection:** Built-in 1.5 KV magnetic isolation

**No. of Ports:** 1

**Speed:** 10/100 Mbps

### Serial

**Interface:** RS-232, 8-pin RJ45

**No. of Ports:** 16 ports (CN2510-16), 8 ports (CN2510-8)

**Signals:** TxD, RxD, RTS, CTS, DTR, DSR, DCD, GND

**Console Port:** 1 RS-232 console port (8-pin RJ45)

**Serial Line Protection:** 15 KV ESD for all signals

### Power Line Protection

1 KV Burst (EFT), EN61000-4-4

0.5 KV Surge, EN61000-4-5

### Serial Communication Parameters

**Parity:** None, Even, Odd, Space, Mark

**Data Bits:** 5, 6, 7, 8

**Stop Bit(s):** 1, 1.5, 2

**Flow Control:** RTS/CTS, XON/XOFF

**Speed:** 50 bps to 921.6 Kbps

### Software

**Protocols:** TCP/IP, UDP, ICMP, NetBUEI, DHCP, PPP, SLIP, CSLIP

**Applications:** Telnet, rlogin, rtelnet, DNS, LPD, RCP, WINS, Dial-on-Demand

**Security:** RADIUS, dialback, PAP, CHAP, local user / password

**Management:** SNMP MIB-II

**IP Routing:** Static, RIP-I, RIP-II.

### Software Features

**Utilities:** Utility for Windows 95/98/ME/NT/2000/XP/2003

**OS Driver Support:** Windows 95/98/ME/NT/2000/XP/2003/XP x64/  
2003 x64 COM driver, Linux real TTY driver, SCO  
Unix, SCO OpenServer 5, UnixWare 7, UnixWare  
2.1.x, SVR4.2

**Fixed TTY Driver:** SCO OpenServer 5, SCO Unixware 7.x, QNX

**Real TTY Driver:** Linux (kernel 2.2.x, 2.4.x, 2.6.x)

**MOXA ASPP:** Windows 9x/NT/ME/2K/XP/2003, Linux, UNIX

**Socket:** Standard BSD socket interface

### Applications

**Terminal Sessions:** 8 sessions per port

### Power Requirements

**Power Input:** AC: 100 to 240 VAC, 47 to 63 Hz

DC: ±48 VDC (38 to 72 VDC, -38 to -72 VDC)

**Power Consumption:** CN2510-8/16: 235 mA for 100V, 145 mA for 240V

CN2510-8/16-48V: 260 mA (at 48V max.)

### Environment

**Operating Temperature:** 0 to 55°C (32 to 131°F), 5 to 95% RH

**Storage Temperature:** -20 to 70°C (-4 to 158°F), 5 to 95% RH

**Gross Weight** CN2510-8: 3580g  
CN2510-8-48: 3340g  
CN2510-16: 3600g  
CN2510-16-48: 3400g

### Dimensions

440 x 198 x 45 mm (17.3 x 7.8 x 1.77 in)

### Regulatory Approvals

#### EMC:

CE: EN55022 Class A / EN55024

FCC: FCC part 15 subpart B, Class A

#### Safety:

UL: UL60950

TÜV: EN60950

**Warranty:** 5 years

#### MTBF:

CN2510-8: 1346703 hours

CN2510-16: 101349 hours

## Ordering Information

**CN2510-8:** 8-port RS-232 Terminal Server

**CN2510-8-48V:** 8-port RS-232 Terminal Server

**CN2510-16:** 16-port RS-232 Terminal Server

**CN2510-16-48V:** 16-port RS-232 Terminal Server

### Optional Accessories

**Power Cord:** See page 12-10

**Serial Cable & Serial Adapter:** See page 12-4

### Package Checklist

- 1 CN2510
- Quick Installation Guide
- Document and Software CD-ROM
- Power Cord x 1 (AC model only)
- CBL-RJ45F9-150 x 1
- CBL-RJ45M25-150 x 1